

Quick-Start Guide for AT&T Windows Mobile

This Quick-Start Guide gives you instructions for installing and removing the TeleNav GPS Navigator application. For detailed instructions including how to run TeleNav GPS Navigator for the first time, please consult the full User's Guide.

TeleNav Maps is a free application that allows you to view static maps to a chosen destination. In order to get turn-by-turn GPS directions with moving maps, call TeleNav or your carrier's Customer Support to subscribe to the TeleNav GPS Navigator service. You can still download the application without a subscription to use TeleNav Maps.

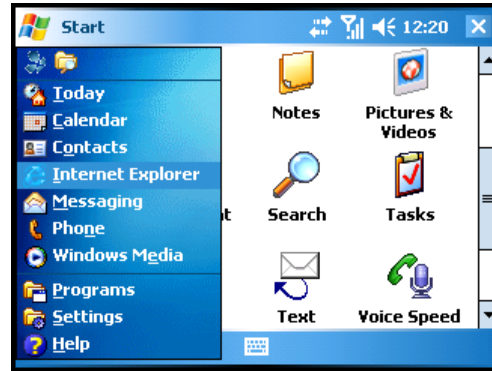
Installing TeleNav GPS Navigator v5.2 and TeleNav Maps v2.0

TeleNav GPS Navigator can be installed on your Pocket PC in two different ways:

- 1) By using the device's Internet browser and downloading the application directly to your handset over the air (OTA), or
- 2) By loading the application from a distribution CD using the Microsoft ActiveSync application. You should receive the distribution CD in a package with your Bluetooth GPS Receiver if you have purchased one from TeleNav.

Using the OTA download method to install

1. Click the **Start** menu and choose "Internet Explorer."



2. Enter the following URL, depending on the application you would like to download:

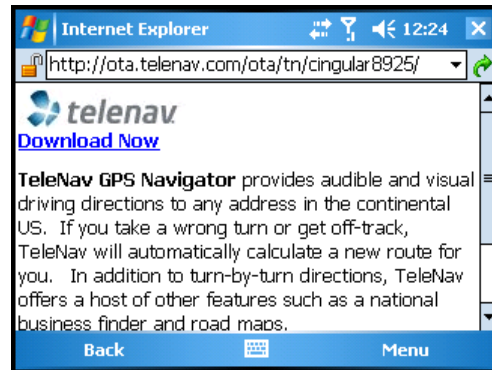
- TeleNav GPS Navigator (requires a subscription):
<http://ota.telenav.com/att/tnn>
- TeleNav Maps (free):
<http://ota.telenav.com/att/tnm>

3. Click the **GO** arrow.

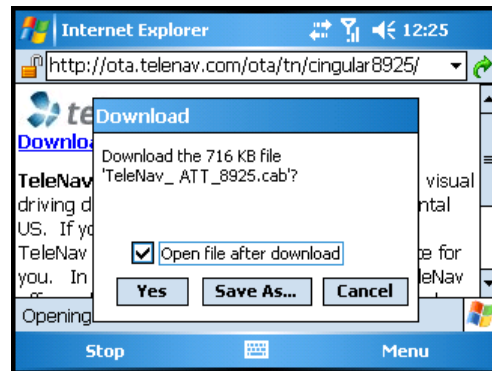


Quick-Start Guide for AT&T Windows Mobile

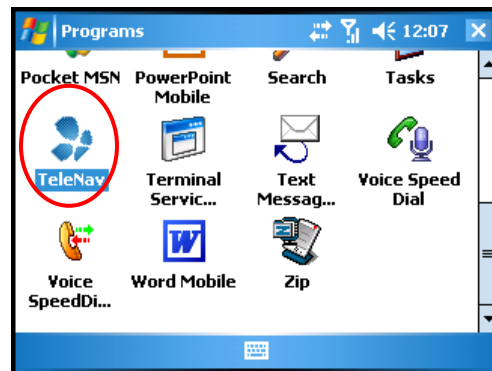
4. A page will appear describing the features of TeleNav GPS Navigator. Select the link **Download Now**.



5. The download process will begin immediately, and a warning message will be displayed. Press **YES** to begin the download.



6. After the download process has completed successfully, locate the TeleNav application icon on the applications menu.



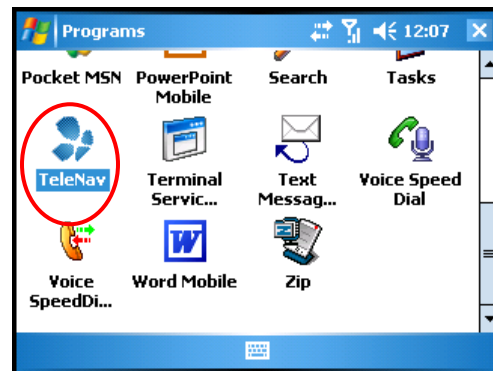
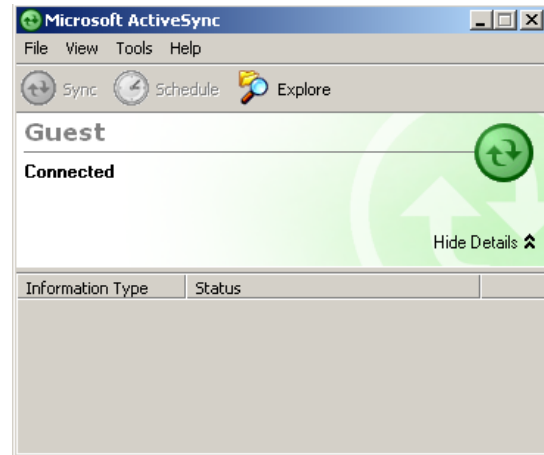
Quick-Start Guide for AT&T Windows Mobile

Using the CD and Microsoft ActiveSync

NOTE: You must have the Microsoft ActiveSync desktop software installed on your personal computer (PC) and have created a synchronization relationship with the device before completing the steps below.

1. Insert the TeleNav application CD into your CD or DVD drive.
2. Browse the CD and open the Pocket PC folder. Then find the zipped CAB file that corresponds to the device and drag it to the folder created for your device under My Documents.
3. Connect the device to the computer. The ActiveSync application will automatically transfer the TeleNav application to the device.
4. Open the Programs menu and verify that the TeleNav application icon is now available. You may need to scroll down to see the TeleNav icon.

NOTE: We recommend that you install the TeleNav application on the device when the option is given during the file installation.

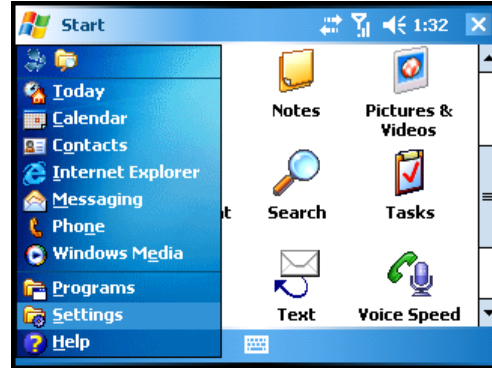


Quick-Start Guide for AT&T Windows Mobile

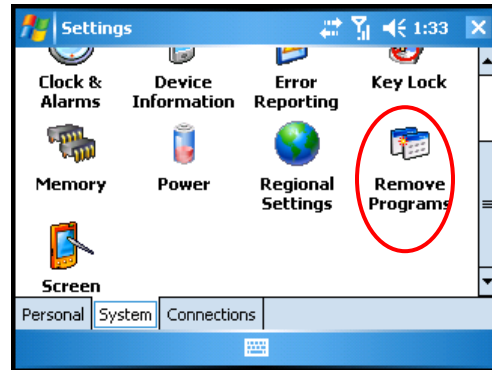
Removing TeleNav GPS Navigator and TeleNav Maps

Do the following steps to remove the TeleNav application from your device.

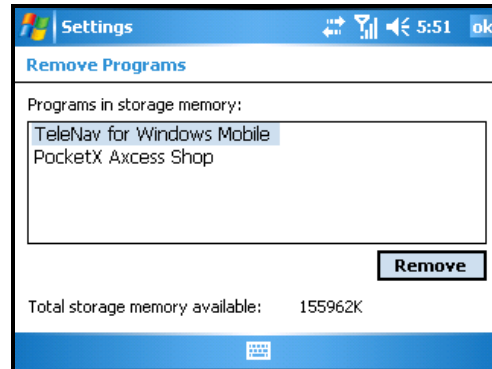
1. Go to Start Menu and choose "Settings."



2. In the System tab, choose "Remove Programs" (you may need to scroll down to see this item).



3. In the list, highlight "TeleNav" and click **Remove**.



Quick-Start Guide for AT&T Windows Mobile

4. Click **Yes** on the Delete Application warning message.
5. Verify that the application is no longer available on the handset menu.

